

CIRCULAR BREAKING SAW

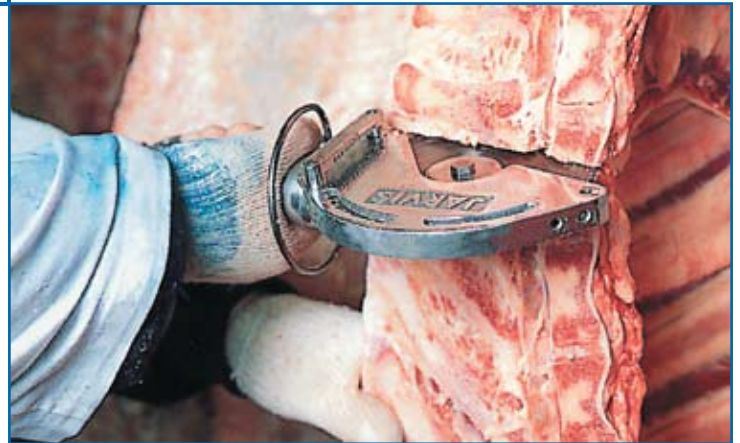
Model SPC 140, Model SPC 165



The Jarvis Model SPC 140 and Model SPC 165 - pneumatically powered general purpose breaking saws.

JARVIS

- The SPC 140, with a 1.5 in (38 mm) cutting depth, or SPC 165 with a 2 in (51 mm) cutting depth, are ideally suited for:
 - Beef: Breaking forequarters and beef plates; also hot and cold ribbing.
 - Pork: Ham and shoulder marking, ribbing and chine bone removal.
- Lightweight and flexible - allows operators to use the tool both hanging and on the table.
- More power - high efficiency air motor for more horsepower and lower operating costs.
- Heavy duty gears made to withstand all uses in the meat packing industry.
- All stainless construction.
- Lever style adjustable depth gauge for precise depth control.
- Instant stop blade.
- Meets national and international requirements for hygiene and safety.



THE SPC SAWS - POWERFUL, LIGHTWEIGHT, FLEXIBLE

CIRCULAR BREAKING SAW

Model SPC 140, Model SPC 165

Specifications

Drive	Pneumatic	
Model SPC 140 / SPC 165		
Motor Power	0.85 hp	630 W
Operating Pressure	90 psi	6.2 bar
Air Consumption	27.3 ft ³ / min	0.77 m ³ / min
Blade Speed	1775 rpm	
Control Handle	Single Trigger	Pneumatic
Blade Diameter		
SPC 140	5.5 in	140 mm
SPC 165	6.5 in	165 mm
Cutting Depth (maximum)		
SPC 140	1.5 in	38 mm
SPC 165	2.0 in	51 mm
Overall Length	16.5 in	419 mm
Weight	5.85 lbs	2.65 kg

Equipment Selection and Accessories

Order Number

Model SPC 140 / SPC 165		
SPC 140		4001027
SPC 140 with Ergo Handle		4001038
SPC 165		4001028
SPC 165 with Ergo Handle		4001039
Air Hose	length 16 ft / 5 m	3059018
Air Filter / Regulator / Lubricator		3022003
Blades		
SPC 140		
5.5 in / 140 mm diameter blade - 120 teeth		1023362
5.5 in / 140 mm diameter blade, skip tooth blade - 60 teeth		1023363
SPC 165		
6.5 in / 165 mm diameter blade - 140 teeth		1023324
6.5 in / 165 mm diameter blade, skip tooth blade - 60 teeth		1023308
Optional:	"T" Handle Kit - Right Hand	3019218
Balancer		4042033



Products for the meat and poultry industry

Jarvis Products Corporation · 33 Anderson Road · Middletown, CT 06457-4926 · United States of America
 Telephone (860) 347-7271 · Fax (860) 347-9905 · sales@jarvisproducts.com · www.jarvisproducts.com